

SLR

Rotary Lobe Pump



APPLICATION

The SLR pump is a positive displacement rotary lobe pump with sanitary design suitable for use in the dairy, foodprocessing, beverage, cosmetics, pharmaceutical and fine chemicals industries.

This pump is perfect for managing all kinds of fluid, of either low or high viscosity, as well as for filtering and bottling applications. Products containing fragile solids such as curd can be pumped without damage thanks to the specially designed lobes.

DESIGN AND FEATURES

The SLR pump is a bare shaft rotary lobe pump. It is made of a cast stainless steel pump casing and cover, and tri-lobe rotors with sanitary attachment.

The SLR rotary lobe pump is provided with an external single mechanical seal, C/SiC/EPDM. The seal is balanced and has a hygienic design. When required, other materials can be used. The pump is authorized to carry 3-A symbol.

Note: Consult the options of the pumps authorized to carry 3-A symbol.

TECHNICAL CERTIFICATION

Materials

Parts in contact with the product	1.4404 (AISI 316L)
Bearing support	GG 25
Gaskets in contact with the product	EPDM

Mechanical seal

Rotary part	Silicons carbide (SiC)
Stationary part	Carbon (C)
Gasket	EPDM

Surface Finish:

Internal	$Ra \leq 0,8 \mu m$
External	Matt

Connections:

DIN 11851

OPERATING LIMITS

Maximum working pressure	1600 kPa (16 bar)	232 PSI
Temperature range (EPDM)	-10°C to 120°C	14°F to 248°F
Temperature SIP, max. 30 min	140°C	284°F

Pompa	Volume at 100 rev. [l]	Maximum flow [m³/h]	Maximum differential pressure [bar]	Maximum speed [rpm]
SLR 0-10	1,03	0,6	10	950
SLR 0-10	2,1	1,2	10	950
SLR 0-10	3,0	1,7	5	950
SLR 1-25	10,0	5,7	10	950
SLR 1-40	13,9	7,9	5	950
SLR 2-40	23,4	13,3	10	950
SLR 2-50	30,1	17,1	5	950
SLR 3-50	67,7	29,3	10	720
SLR 3-80	95,3	41,2	5	720
SLR 4-100	217,2	52,1	8	400
SLR 4-150	321,2	77,2	5	400
SLR 5-125	554,7	133,1	8	400
SLR 5-150	662,2	158,9	5	400

OPTIONS

Mechanical seals: SiC/SiC or TuC/SiC.

Apart from the single mechanical seal, other sealing types are available:

flushed mechanical seal (quench), double mechanical seal, lip seal (FPM or PTFE), gland packing, O-ring.

Gaskets: FPM or PTFE.

Relief valve on the front cover or external by-pass.

Bi-wing lobes.

Heating chamber.

Isolation can.

Vertical support.

Rectangular nozzle.

Various kinds of drives and protections (gearbox drive with optional frequency converter, pulley/mechanical drive speed selector).

Trolley and/or control panel.

Connections: Clamp, SMS, RJT, etc.

ATEX certification.

OPTIONS PUMPS AUTHORIZED 3A

Connections: CLAMP-OD, CLAMP-DIN, DIN11864.

Sealing: single mechanical seal.

Mechanical seal materials: C/SiC and SiC/SiC.

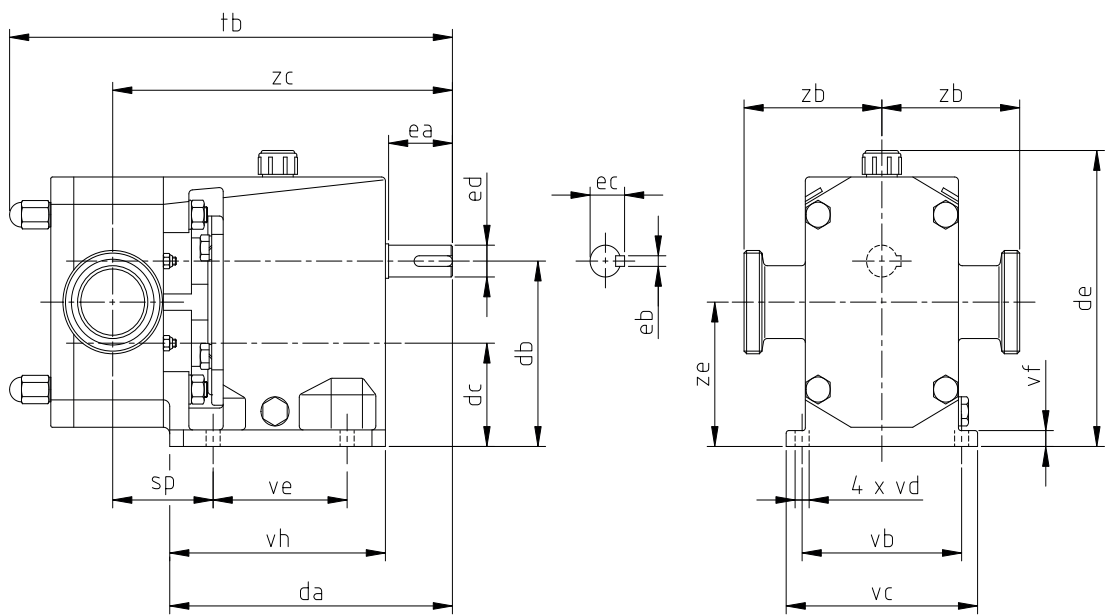
O-rings: EPDM and FPM.

Support: horizontal and vertical.

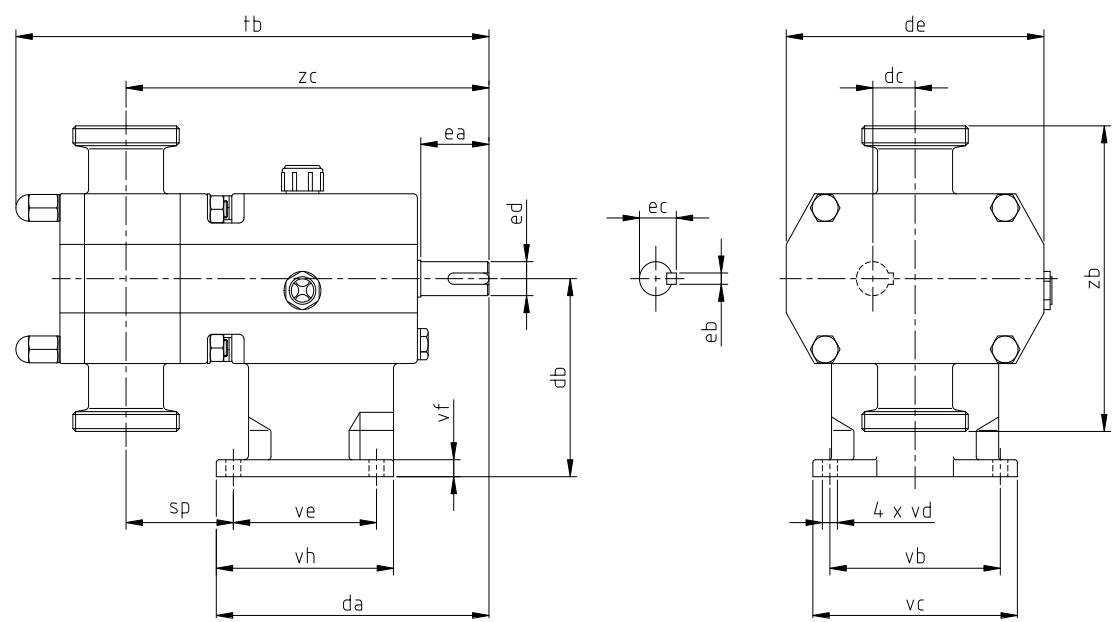
Drain: vertical Clamp-OD.

DIMENSION

Pompa	DN	DIN 11851	SMS	CLAM OD
		zb		
SLR 0-10	10 ½"	64,0	-	70,0
SLR 0-10	20 ¾"	67,0	-	77,0
SLR 0-10	25 1"	72,0	62,0	72,0
SLR 1-25	25 / 1"	94,5	91,5	94,0
SLR 1-40	40 / ½"	99,5	100,0	99,0
SLR 2-40	40 / ½"	107,0	108,0	106,5
SLR 2-50	50 / 2"	108,0	108,0	106,0
SLR 3-50	50 / 2"	135,5	135,5	133,5
SLR 3-80	80 / 3"	137,5	137,5	133,5
SLR 4-100	100 / 4"	170,0	170,0	161,5
SLR 4-150	150 / 6"	180,0	-	168,0
SLR 5-125	125 / 5"	225,0	-	218,0
SLR 5-150	150 / 6"	230,0	-	218,0



DIMENSIONS WITH VERTICAL SUPPORT



PERFORMANCE CHARTS

